

Series GBM

Code No. 89

Roll No.

--	--	--	--	--	--	--

Candidates must write the Code on the title page of the answer-book.

- Please check that this question paper contains **9** printed pages.
- Code number given on the right hand side of the question paper should be written on the title page of the answer-book by the candidate.
- Please check that this question paper contains **7** questions.
- **Please write down the Serial Number of the question before attempting it.**
- 15 minute time has been allotted to read this question paper. The question paper will be distributed at 10.15 a.m. From 10.15 a.m. to 10.30 a.m., the students will read the question paper only and will not write any answer on the answer-book during this period.

## MULTIMEDIA AND WEB TECHNOLOGY

Time allowed : 3 hours

Maximum Marks : 70

- Note :** (i) *All questions are compulsory.*  
(ii) *Answer the questions after carefully reading the text.*

1. (a) Write any two advantages of using DBMS. 1  
(b) MySQL is a RDBMS. Is this statement *true* or *false*? 1  
(c) Study the following data and answer the questions given below :

State_Code	State name	State Capital
GA	Georgia	Atlanta
MA	Massachusetts	Boston
ME	Maine	Augusta
RI	Rhode Island	Providence
WI	Wisconsin	Madison
*		

Record: 1 of 5

	City_code	City_name	State_code
▶ +	9	Augusta	ME
+	10	Atlanta	GA
+	11	boston	MA
+	12	Cambridge	MA
+	13	Madison	WI
+	14	Milwaukee	WI
+	15	Providence	RI
*	0		

- (i) What is the degree and the cardinality of CITY table ? 1
- (ii) Name the fields, which can act as the primary key in STATE table. 1
- (iii) What type of relationship exists between these two tables ? 1
- (d) Give the full form of GIF. 1
- (e) Name any two popular sound formats that are mostly used while designing web pages. 1
- (f) Name any one software used for image editing and for sound editing. 2
- (g) .MOV is the extension of which type of files ? 1

2. Answer the following questions based on Macromedia Flash :

- (a) How is a Flash movie embedded in HTML ? 2
- (b) Differentiate between stage and workarea. 2
- (c) What do you mean by a key frame ? 1
- (d) What is the use of a locked layer ? 1
- (e) Consider the figure given below and do as directed :

**FUTURE** **ERUTUF**

- The text on the right hand side shows the position for frame 20.
- The text on the left hand side shows the position for frame 1.
- The text in frame 1 moves to frame 20 and changes as shown in the figure.

Write the procedure and property settings for animating the above scenario.

3. Answer the following questions based on HTML :

- (a) Explain the use of HTML tag to embed an audio clip in HTML file. 2
- (b) Write the HTML code to generate a Web Page in the format given below : 8

Consider the following while writing the HTML code :

1. Title of the page should be “Media in life”.
2. Background of the page is “pink”, Link colour should be “blue”.
3. Heading of the page is “maroon”.
4. Picture used in the page is the file “images.jpeg”.
5. Text in paragraph is “red”.
6. Table should have a border of width 1, border of the table should be “green”.
7. Pages linked to :
  - Evolution as “evol.html”
  - References as “ref.html”
8. Bottom message is of size 2 and mail is linked to contact@abc.com.

### Media (communicaiton)



Media are the collective communication outlets or tools that are used to store and deliver information or data. It is either associated with communication media, or the specialized communication businesses such as: print media and the press, photography, advertising, cinema, broadcasting (radio and television), and/or publishing.

#### Contents:

1. Evolution
  - o Electronic Media
  - o Social Impacts
2. References
  1. Communication
  2. Media Psychology

#### Media

1 Advertising Media	2 Broadcast Media
3 Digital Media	4 Mass Media

For more details [Mail to us](#)

4. Answer the following questions based on PHP :

2

(a) Identify the errors and rewrite the given code :

```
<html>
  <body>
    <?php
      $d = date("D");
      Switch ($d)

        case "Mon":
          echo "Today is Monday";
          break;

        case "Tue":
          echo "Today is Tuesday";
          break;

        case "Wed":
          echo "Today is Wednesday";
          break;

        case "Thu":
          echo "Today is Thursday";
          break;

        case "Fri":
          echo "Today is Friday";
          break;

        case "Sat":
          echo "Today is Saturday";
          break;

        case "Sun":
          echo "Today is Sunday";
          break;

        default
          echo "Wonder which day is this ?";
    }
  </body>
</html>
```

- (b) What is the importance of \$\_POST over \$\_GET ? 2
- (c) Using PHP, create a text file saved as C:\xampp\htdocs\test\exam.txt in which write the four lines of the English poem as written.

*Fisherman in the cold sea  
would not harm whales  
and the man gathering salt  
would not look at his hurt hands*

In the same file write the code to display the number of vowels in this poem. 3

- (d) Give the output of the following statements : 3
- (i) `echo strlen("Hello world!");`
- (ii) `echo substr("Hello world!", 6);`
- (iii) `echo strcasecmp("Hello", "Hello");`

**5. Answer the following questions based on PHP :**

- (a) What will be the values of the variables x and y after executing the following code ? 1

```
$x=0; $y=0;
for($x=1;$x<=5; ++$x)
{
    $y = $x++;
    -- $y;
}
```

- (b) What is meant by superglobals in PHP ? Give the names of any two superglobals. 2
- (c) Why is it important to close the active connections when their requirement is over ? 1

- (d) Following is the code to create a connection to the server and to create a database named myDB in mySql. Fill in the blanks to complete the code :

3

```
<?php
$servername = "localhost";
$username = "username";
$password = "password";

// Create connection
$conn = mysqli_connect(_____, $username, _____);
// Check connection
if _____ {
    die("Connection failed:" . mysqli_connect_error());
}

// Create database
$sql = "_____ DATABASE myDB";
if (mysqli_query($conn, _____))
{
    echo "Database created successfully";
}
else
{
    echo "Error creating database:" . mysqli_error($conn);
}

mysqli_close(_____);
?>
```

- (e) Write the PHP code to set a cookie named “user” and value “exam”. The cookie should expire after a week. Also display the values stored in \$\_COOKIE. [www.CentumSure.com](http://www.CentumSure.com)

3

6. Answer the following questions based on JavaScript :

(a) With the help of suitable example, explain two points of difference between global and local variables. 2

(b) Give the output of the following set of statements : 2

```
<SCRIPT LANGUAGE="JavaScript">
var num = [4];
var con = 0;
for( i = 3; i>=0; i-- )
{
    num[i] = i * con;
    document.write( num[i] + "<br>");
    con = con + 1;
}
</script>
```

(c) Rewrite the above code using while loop without affecting the output. 2

(d) Create a form that contains a Tax Calculator as shown below. When the user enters his salary, the tax to be paid should be displayed in the second textbox.

The calculation of tax should be done as follows :

If the salary is greater than or equal to 200000, then the tax should be 10% of the salary.

If the salary is greater than or equal to 100000 but less than 200000, then the tax should be 5% of the salary.

And if the salary is less than 100000, then no tax.

Write the HTML code for creating the form and the embedded JavaScript code for the click event of the button. 4

---

# Tax Calculator

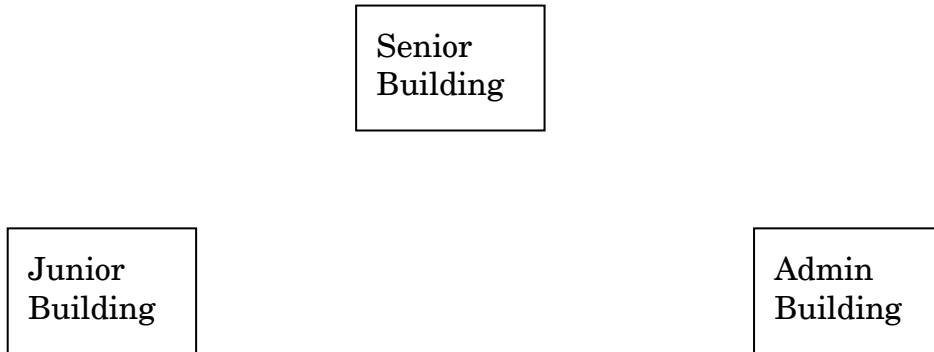
Enter Your salary

Your tax is

7. Answer the following questions based on Communication and Network concepts :

- (a) Name one Open Source Indian Operating System. 1
- (b) Write any two points of difference between logical address and physical address of a computer connected over LAN. 2
- (c) Illustrate the layout for connecting 5 computers in a Bus and a Tree topology of networks. 2
- (d) What do the following top level domains signify ? 1
  - (i) .com
  - (ii) .org
- (e) Sarvodaya school is setting up their new campus in Mumbai. You, as a network expert, have to study the data given below and answer the following questions :

Physical locations of the buildings of the school :



Building-to-Building distances are as follows :

Admin to Senior	60 m
Admin to Junior	120 m
Junior to Senior	70 m



Each of the above buildings has the following number of computers :

Junior	60
Senior	50
Admin	120

- (i) Suggest and draw the layout for a network, with proper justification to connect all the buildings. 1
- (ii) Suggest the most appropriate building to house the server with proper justification. 1
- (iii) What type of network, out of the following, is formed by connecting the computers of these buildings : 1
- LAN
  - MAN
  - WAN
- (iv) Which of the following is used to connect each building with one another considering security as the main issue along with high speed connectivity : 1
- Twisted pair cable
  - Coaxial cable
  - Optical fiber